

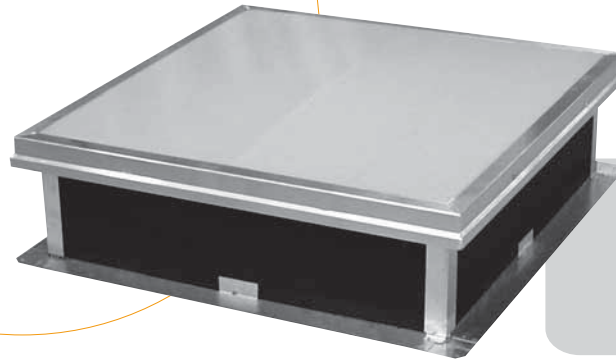
Waterproofed
roof

Product line



Hexasteel Fix

Comfort range



Hexasteel Fix is a skylight specifically designed for the waterproofed roofs, and which can be installed on all kind of building.

Without any mechanism, this system allows the light transmission inside the building.

Dimensions

Performances

References	Inner dimensions in cm	Lighting Surface (SLu) in m ²
C 50	50 x 50	0,25
C 60	60 x 60	0,36
C 70	70 x 70	0,49
C 80	80 x 80	0,64
C 85	85 x 85	0,72
C 100	100 x 100	1,00
C 120	120 x 120	1,44
C 130	130 x 130	1,69
C 140	140 x 140	1,96
C 150	150 x 150	2,25
C 160	160 x 160	2,56
C 180	180 x 180	3,24
C 200	200 x 200	4,00
50 x 100	50 x 100	0,50
70 x 100	70 x 100	0,70
100 x 140	100 x 140	1,40
100 x 150	100 x 150	1,50
100 x 200	100 x 200	2,00
120 x 160	120 x 160	1,92
120 x 180	120 x 180	2,16
120 x 200	120 x 200	2,40
120 x 240	120 x 240	2,88
120 x 250	120 x 250	3,00
120 x 300	120 x 300	3,60
140 x 200	140 x 200	2,80
150 x 250	150 x 250	3,75
150 x 300	150 x 300	4,50
160 x 200	160 x 200	3,20
160 x 250	160 x 250	4,00
160 x 300	160 x 300	4,80
180 x 250	180 x 250	4,50
180 x 300	180 x 300	5,40
200 x 250	200 x 250	5,00
200 x 300	200 x 300	6,00

13

our solutions for
the roof

adexsi

Global solutions for lighting,
daily and smoke ventilation

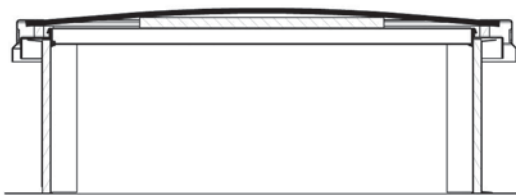
Waterproofed
roof

Product line



Hexasteel Fix

Comfort range



Hexasteel Fix

COMPONENTS:

- A metallic upstand of 30, 40 or 50 cm high, which can be equipped with an insulation board 15 mm ($U_f = 2.5 \text{ W/m}^2 \text{ K}$) or 30 mm ($U_f = 1.5 \text{ W/m}^2 \text{ K}$). The surface of the insulation can be bitumen or PVC coated for a direct weld with the waterproofing membrane.
- An aluminium frame which protects the periphery of dome or PCA.

FILLING:

- Our standard:
 - PCA 10 mm 4 skins
- In option:
 - PCA 16 mm 7 skins
 - Double dome in PMMA, polycarbonate or Hexachoc 1200J

For additional details, see the rubric of the options.

14

our solutions for
the roof

adexsi Global solutions for lighting,
daily and smoke ventilation